

USER MANUAL



Thank you for choosing Better Bathrooms.
Please read this manual before installing your product
and keep for future reference.

**better
bathrooms**

Traditional Exposed Bath Waste - Chrome CHEXPBW2

Traditional Exposed Bath Waste - Matt Black MBEXPBW2

Traditional Exposed Bath Waste - Brushed Brass BBEXPBW2



CENTRAL IMAGE HERE FOR REFERENCE ONLY

- **Single-person assembly**
- **Tools required**
- **We always recommend using professional tradespeople to install your product**

V1_10.03.25

Congratulations on your purchase

And welcome to our growing gang of savvy shoppers

We're on a mission to bring you extraordinary bathroom products, for less. From modern to traditional style ceramics, plus the gorgeous fixtures, fittings and furniture to match. So, you can fall in love with your space every single day.

As one of the UK's largest independent bathroom stores, we've received countless awards; including the National Business Awards UK, the Digital Entrepreneur Awards and being placed on The Sunday Times Fast Track 100.

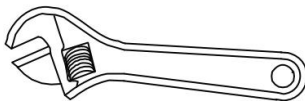
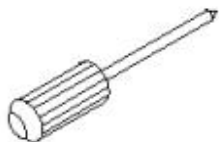
We hope your new product goes above and beyond your expectations. However, should any problems occur, please:

- log in to your account and contact our customer services team via your self-serve portal – betterbathrooms.com/CustomerAccount/Login
- contact us via betterbathrooms.com/content/contact-us

Important information

- Please read these instructions thoroughly and retain for future reference
- The overflow pipe can be cut to size if needed.

Tools required (Tools not provided)



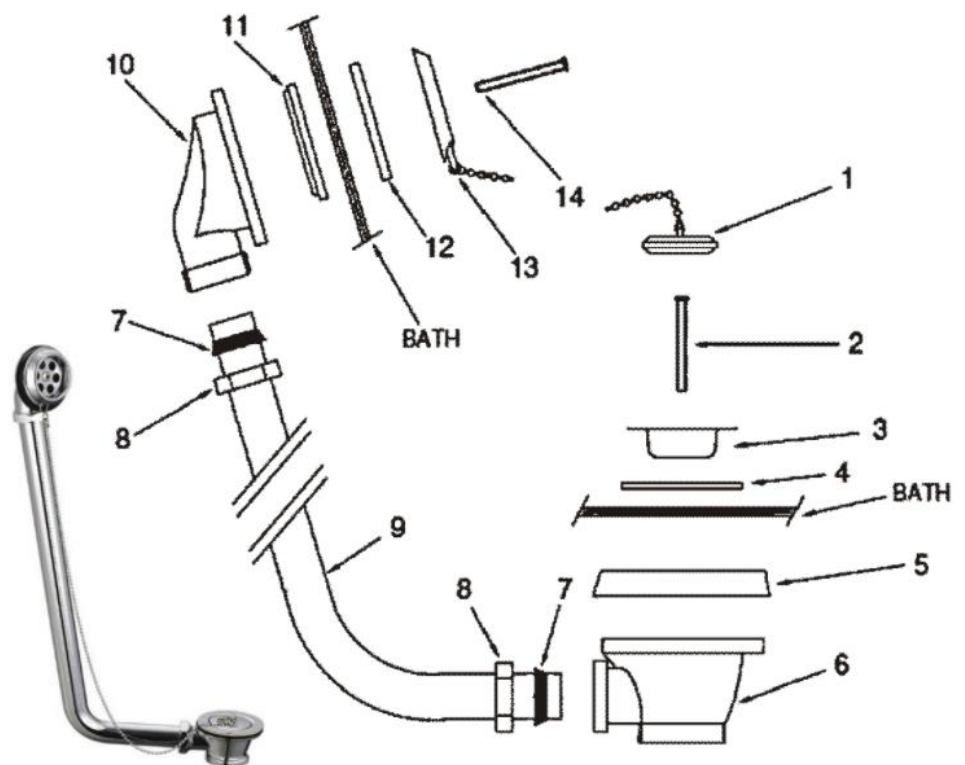
Warning: Please use a soft cloth to protect the tool or cover the surface to prevent any scratches.

Installation

1. Identify all components are present prior to installation.
2. Remove screw (2) form flange (3), then remove the flange from the waste body (6).
3. Secure the waste body (6) against the underneath of the bath with the sealing washer (5) in position. Use the flange (3) with the rubber washer (4) between the flange and the bath, securing the assembly with screw (2).
4. It is recommended that a silicon sealant be applied to all sealing faces of the washer (4).
5. Replace screw (2). **Do Not over tighten!**
6. Use the conical washer (7) and nut (8), in the order shown, to hold the overflow pipe (9) into the waste body (6).
7. Use the same process to assemble the overflow elbow (10) to the overflow pipe (9).
8. Secure the overflow elbow (10) to the bath using the sealing washer(11) and the overflow washer(12) positioned either side of the bath surface. Then place the overflow (13) on top of the overflow washer (12) and secure the assembly using screw (14).
9. It is recommended that a silicon sealant be applied to all sealing faces of washer (12).
10. Tighten screw (14). **DO NOT OVER TIGHTEN!**
11. Check all joints and connections for leaks before use.
12. **The overflow pipe (9) can be cut to size if needed.**

Components

1. Plug
2. Screw
3. Flange
4. Rubber washer
5. Sealing washer
6. Waste body
7. Conical washer
8. Nut
9. Chrome tube (over sizes)
10. Overflow elbow
11. Overflow seal washer
12. Washer
13. Overflow
14. Fixing screw



Cleaning

Please be advised that no abrasive agents or materials or harsh chemicals can be used for cleaning this product, otherwise warranty will be void.

Please clean with warm soapy water, and use soft cloth only.

For more information

- visit betterbathrooms.com
- email customerservices@buyitdirect.co.uk
- call 0330 390 3062
- write to Trident Business Park, Neptune Way, Huddersfield, HD2 1UA

**better
bathrooms** 

Part of the BuyItDirect Group